

Elevion
Group



Cool

HIGH TECH CLIMA

MEMBER OF
ELEVION GROUP

OVER
20 YEARS

ON ROMANIA'S MARKET

High Tech Clima specializes in the design, execution, and maintenance of HVAC systems, as well as electrical, plumbing, and security installations for both civil and industrial sectors.

ACTIVITIES:

- General MEP Contractor
- HVAC Installation Services
- Design and Consulting
- Plumbing Installations
- Protection against Fire
- Electrical Installations and Automation
- Maintenance

Types of facilities:

- ✔ Commercial buildings
- ✔ Logistics centres
- ✔ Office buildings
- ✔ Residential complex
- ✔ Military facilities



VISION

Our objective at **High Tech Clima** is to constantly deliver projects that surpass the expectations of our clients. Our main priority is maintaining the high quality of the services we provide, as well as the efficiency in accomplishing them.

MISSION

- ✔ Ensuring the best price-quality ratio for all provided services
- ✔ Guaranteeing that our installations are trustworthy and executed using the best practices in the field
- ✔ Delivering sustainable projects
- ✔ Keeping our workflow flexible, constantly adapting to either technical or market-related challenges
- ✔ Expanding our market presence within Romania and throughout Europe
- ✔ Offering a comprehensive array of integrated solutions and services to all our business partners

+ 250

employees

+ 400

completed
projects

60%

in-house

40%

subcontractors

workforce

177

blue-collar
workers

45

engineers

28

management and
administrative
staff

TURNOVER (2020-2025)



**High Tech Clima is
part of**

Elevion
Group



High Tech Clima is a member of Elevion Group, a leading European provider of end-to-end decarbonization and higher energy efficiency solutions.

Elevion Group brings together highly specialized independent companies which provide energy solutions and services that are flexible, durable and accesible, and offers them the support and financial power of an inernational holding.

Elevion Group operates in **over 13 countries** - including Germany, Austria, Italy, Poland and Romania, having over **80 consolidated companies** and **over 4.700 employees**.

Together, in 2024, we accomplished **over 6000 projects**, which generated a total revenue of over **1 bilion €**.

SERVICES



HVAC

**Smoke
control**



**Electrical
installations**

**Wastewater
sewage**



**Fire extinguishing
with special gas**

**Specialized
maintenance**



**Rainwater
sewage**

**Solar panel
systems**



Plumbing

**Sprinklers
& Hydrants**



**BMS &
Automations**

**Renewable
energy**





Cool

by

HIGH TECH CLIMA

MEMBER OF
ELEVION GROUP

COMPLETED PROJECTS



THE NATIONAL CATHEDRAL PHASE 1

The National Cathedral stands as one of the most ambitious architectural and engineering projects in modern Romania, serving as a national landmark defined by its scale, complexity, and urban significance. Within this flagship project, **High Tech Clima** delivered cutting-edge MEP infrastructure, integrating advanced HVAC, electrical, and plumbing systems alongside sophisticated fire detection, suppression, and building automation solutions.

Surface area : **6.000 m²**

Volume: **323.000 m³**



Bucharest, Romania

MOLDOVA MALL

Mall Moldova is the largest retail destination in the Moldavia region.

High Tech Clima successfully delivered the full-scale HVAC and plumbing installations for this landmark project.

Mall Moldova offers a complete shopping, dining, and leisure experience, meticulously designed to cater to all visitor demographics.

Surface area: **29.600 m²**



Iasi, Romania

MILITARY AIR BASE

The modernization of an air base, a major strategic objective, which benefited from an investment of over 150 million USD.

High Tech Clima's contribution to this strategic objective includes the design and execution of external utility networks (water, fire protection, and sewage), high-performance HVAC systems, and comprehensive indoor and outdoor electrical installations, all supporting the air base in its mission to defend the national airspace.



Military Air Base, Romania

ONE COTROCENI PARK

This is the largest urban regeneration project in Bucharest, developed by One United Properties.

For this architectural landmark, **High Tech Clima** executed mechanical installations: HVAC, plumbing, and fire suppression systems.

The project integrates 80,000 m² of office space and 15,000 m² of commercial areas.

Surface area: **114.000 m²**



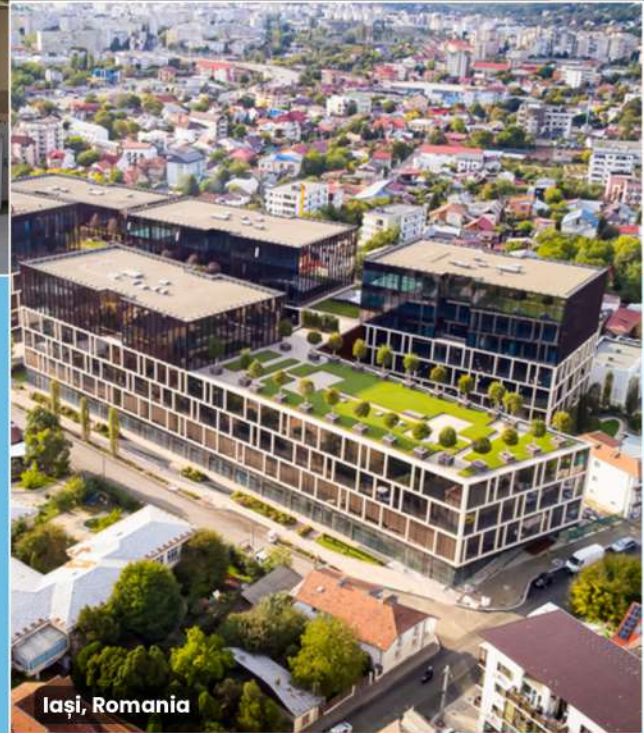
Bucharest, Romania

PALAS CAMPUS

Palas Campus is the largest office building in Romania by surface area.

High Tech Clima executed the HVAC and plumbing installations for all six building blocks, ensuring thermal comfort for the country's premier tech hub. As a certified "green" building, it is recognized for its high energy efficiency.

Suprafața: **91.300 m²**

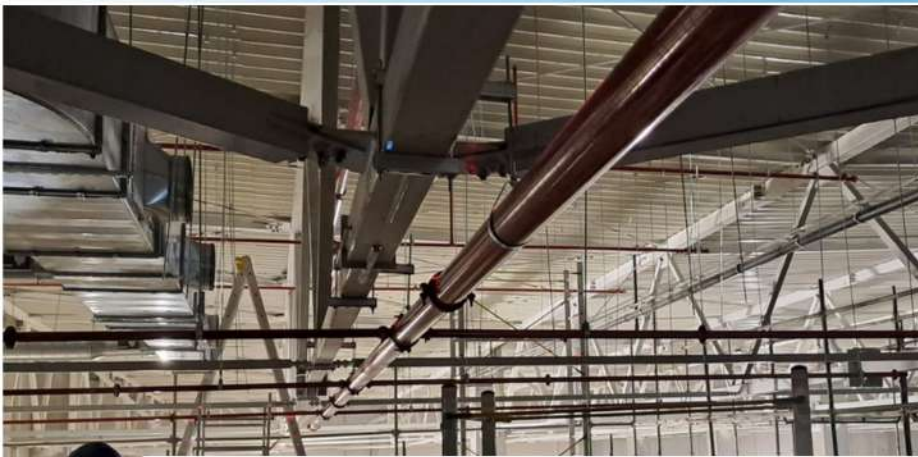


Iași, Romania

CINEMA CITY - MALL MOLDOVA

Completed in 2025, the Cinema City project within Mall Moldova required specialized HVAC solutions designed for high-density traffic and acoustic insulation.

High Tech Clima delivered climate control and ventilation systems that provide silent, efficient air exchange, which is essential for maintaining comfort within cinema auditoriums.



Iași, Romania

SHOPPING CITY TÂRGU MUREȘ

Târgu Mureș Shopping City is a commercial center with integrated facilities, where **High Tech Clima** managed the design and execution of water, sewage, and natural gas networks, as well as electrical installations.

The project has major community impact, providing a modern entertainment hub supported by a reliable technical infrastructure capable of sustaining high-density visitor traffic.

Surface area : **52.235 m²**



Târgu Mureș, Romania

ARGEȘ MALL

Strategically located near the main railway station, the Argeș Mall project serves over 600,000 local residents.

High Tech Clima ensured the integration of high-performance climate control and ventilation systems, specifically optimized for energy efficiency. This investment drives the region's urban revitalization by providing a sustainable commercial space.

Surface area: **52.100 m²**



Pitești, Romania

EMAG LOGISTICS CENTER

High Tech Clima managed the MEP execution for this logistics giant, integrating high-efficiency HVAC systems and complex external infrastructure.

The facility serves multiple international markets, including Germany, Austria, and Croatia, demonstrating HTC's capacity to deliver large-scale industrial projects with a global reach. Our operational efficiency directly supports the uninterrupted logistics flow of the regional e-commerce leader.

Suprafață : **116.500 m²**



Dragodana, Romania

POULTRY FARM TONELLI

The Tonelli Poultry Farm project serves as a cornerstone in the diversification of **High Tech Clima's** portfolio within the agricultural sector. Within this project, we executed both mechanical and electrical installations.

Our intervention guarantees industrial process efficiency and food safety, demonstrating High Tech Clima's adaptability to the specific technical requirements of modern agriculture.

POULTRY FARM AVICOLA

The Avicola Poultry Farm in Tărtășești, specializing in broiler raising, hatching egg production, and day-old chicks, went through a major restructuring. Our industry expertise ensures the efficient management of critical installations

installations necessary for the poultry unit's seamless operation.

High Tech Clima guarantees adaptability and technical quality, delivering systems that uphold biosecurity and productivity standards. Through these sustainable MEP solutions, we support local food infrastructure and the efficiency of modern industrial processes.



Tărtășești, Romania

LEROY MERLIN MODOVA MALL

High Tech Clima successfully completed the M&E infrastructure for the Leroy Merlin store within Moldova Mall, Iași.

Our team implemented high-performance HVAC and electrical systems, essential for a commercial environment of this magnitude.

This investment, exceeding 3 million EUR, generated 120 jobs, establishing the store as a cornerstone of the largest shopping destination in the Moldavia region.

Surface area: **11.000 m²**



Iași, Romania



Cool
by
HIGH TECH CLIMA

MEMBER OF
ELEVION GROUP

A photograph of two construction workers on a site, wearing high-visibility yellow-green safety vests with reflective blue stripes. They are standing on a wooden structure, possibly a scaffolding or formwork, and looking towards a complex network of pipes and conduits. The background shows a concrete ceiling with various cables and pipes. The entire image has a blue color overlay.

ONGOING PROJECTS

ONE HIGH DISTRICT RESIDENTIAL COMPLEX

Developed by One United Properties, One High District is a large-scale residential development project comprising of 786 apartments across three towers and 28 commercial spaces. **High Tech Clima** contributes to this premium district through the full execution of the electrical installations. We guarantee the safety and energy efficiency required for a modern development, consolidating HTC's position as a strategic partner for complex real estate projects.

Surface area : **25.000 m²**



Bucharest, Romania

PRAGMATIC PLAY HQ

High Tech Clima is delivering the fit-out works for the new Pragmatic Play headquarters, located in AFI Tech Park 2. Our contribution includes both the design and execution of mechanical, HVAC, and plumbing systems.

Through customized technical solutions and state-of-the-art climate control systems, we have ensured a high-performance workspace tailored to the specific needs of a leading technology company.



Bucharest, Romania

CLINICAL EMERGENCY HOSPITAL

PROF. DR. AGRIPPA IONESCU

The rehabilitation, modernization, and expansion of the "Prof. Dr. Agrippa Ionescu" Clinical Emergency Hospital in Balotești, Ilfov County. **High Tech Clima** is executing the thermal installation works.

Surface area: **9.500 m²**



OMNIA FACTORY

At the Omnia Starch Factory, **High Tech Clima** is managing one of the flagship industrial projects in its current portfolio. Our contribution focuses on delivering complex MEP systems engineered to support high-capacity production workflows.



EMERGENCY INSTITUTE FOR CARDIOVASCULAR DISEASES AND TRANSPLANT

The Emergency Institute for Cardiovascular Diseases and Transplant (IUBCVT) in Târgu Mureș is a strategic project recently added to our medical portfolio. **High Tech Clima's** involvement focuses on delivering MEP solutions vital to the operation of a specialized hospital. We provide technical expertise for sterile climate control systems and complex plumbing installations that comply with strict medical standards. Through this project, High Tech Clima contributes directly to the modernization of the Romanian healthcare system, ensuring patient safety and comfort.



Târgu Mureș, Romania

POULTRY FARM VIS AGRI

The Vis Agri Poultry Farm is a high-capacity intensive broiler facility and the primary economic driver of the local community.

Specialized in diversified farming operations, the facility relies on **High Tech Clima** for high-efficiency HVAC and water management systems, solutions that are critical for microclimate control and optimizing farm yields.



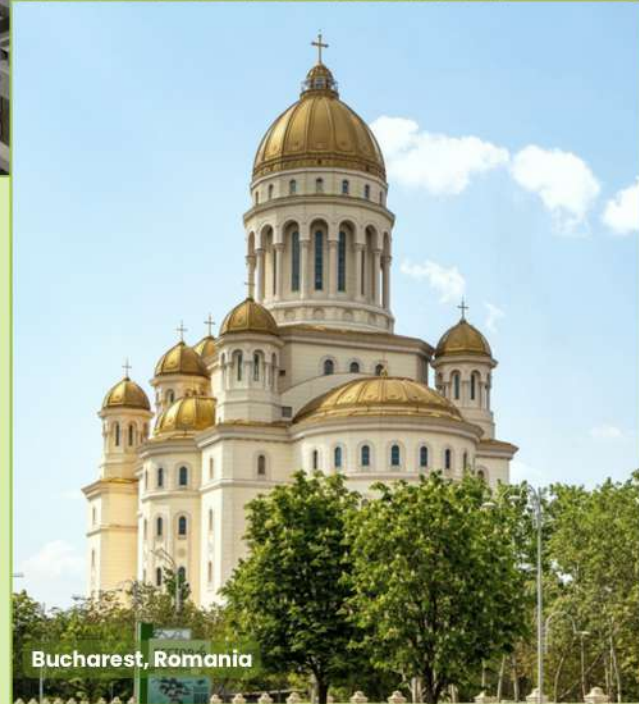
Glodeanu-Siliștea, Romania

THE NATIONAL CATHEDRAL PHASE 2

The National Cathedral stands as one of the most ambitious architectural and engineering projects in modern Romania, serving as a national landmark defined by its scale, complexity, and urban significance. Within this flagship project, **High Tech Clima** delivered cutting-edge MEP infrastructure, integrating advanced HVAC, electrical, and plumbing systems alongside sophisticated fire detection, suppression, and building automation solutions.

Surface area : **6.000 m²**

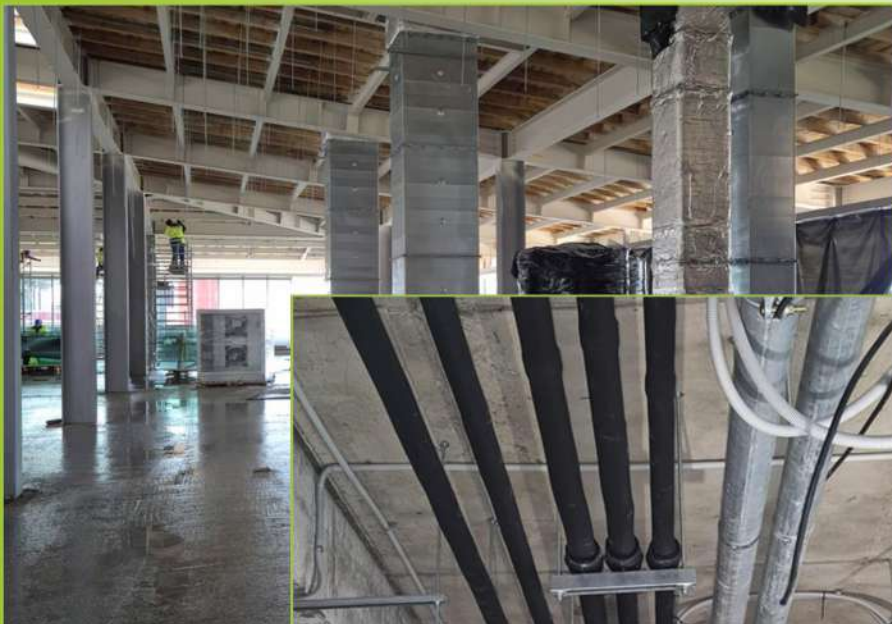
Volume: **323.000 m³**



CAMBRIDGE SCHOOL

High Tech Clima is proud to support academic excellence by delivering complete HVAC and plumbing solutions for the new Cambridge School of Bucharest sports complex, featuring a swimming pool, and dining hall.

Our specialized expertise and commitment to quality ensure a safe, high-performance learning environment, fostering the harmonious development of future generations.



Bucharest, Romania



Cool
by
HIGH TECH CLIMA

MEMBER OF
ELEVION GROUP

Certifications:



**SA8001: Social Accountability
Management System**

**OENORM EN ISO 45001: 2023:
Occupational Health and Safety
(OH&S) Management Systems**



**SR ISO 37001:2017 Anti-Bribery
Management System**

**SR EN ISO 14001: 2015
Environmental Management System**



**SR EN ISO/IEC 27001: 2023: Information
Security Management System**

**SR EN ISO 9001: 2015 Quality
Management System (QMS)**



Certifications:



Operating license to design, install, modify or maintain components of intrusion detection systems



Authorisation to design ventilation systems and installations for smoke and hot gas evacuation



Authorisation to install and maintain ventilation systems and installations for smoke and hot gas evacuation



Authorisation to design fire suppression and mitigation systems and installations



Authorisation to install and maintain fire suppression and mitigation systems and installations



Authorisation to design fire detection and alarm systems



Authorisation for design, installing, commissioning, maintenance and inspection of equipment/installations utilized in explosive environments



Type B Certification for the 'design and execution of indoor/outdoor electrical installations for civil and industrial premises, including overhead and underground service connections, at a nominal voltage of 0.4 kV.'



Type C2A Certification for the 'execution of overhead or underground power lines with nominal voltages ranging from 0.4 kV to 20 kV, transformer stations with a maximum upper nominal voltage of 20 kV, medium-voltage substations, and the medium-voltage electrical components of high-voltage stations



ISC Authorized Testing Laboratory for Construction Analysis and Testing



Authorized Operator of Refrigeration and Cooling Systems

High Tech Clima grows every day, every week, every year, thanks to our team.



Here is a part of High Tech Clima's team, participating at the Cross of Arenas, a sports event held between the "Triumphal Arch" Stadium and the National Arena.

It was more than a race – we detached from daily issues and reconnected with our colleagues.



We are always eager to take part in sports events that promote health, solidarity and performance.



From NZEB to ZEB – Performance without compromise
OAER Event by Vitastal Consulting

OEAR – The Order of Energy Auditors in Romania – organized a private, closed-circuit event, to celebrate excellence in the fields of technical training of specialists in construction, design and energy performance of buildings, and the anniversary of 20 years of success of the VITASTAL CONSULTING company.

High Tech Clima's team was part of the discussions related to the challenges that the construction sector in Romania is facing, to the adaptations that are necessary for the new economic, political and social realities, both at national and international level.

The "L'Étape Romania" Event gathered thousands of cycling enthusiasts, on impressive tracks going through the most beautiful areas of Bucharest – the Constitution Square, the Atheneum, the Royal Palace, the Triumphal Arch.



L'Étape Romania by Tour de France


We are overjoyed to bring our dedication, energy and team spirit, both in the projects we deliver and the way we choose to spend our time

together.

Contact:

 Ionuț Carvaci +40755 144 974
 Florin Dumitru +40756 099 586
 Elena Olteanu +40741 205 739

 **office@climat.ro**
oferte@climat.ro
vanzari@climat.ro

 HQ Romania: Șos. Berceni Nr. 11,
Popești-Leordeni, Jud. Ilfov 077160
Romania

www.climat.ro
www.eleviongroup.com

Follow us on:

 **High Tech Clima S.A.**

 **@high.tech.clima**

 **High Tech Clima**



Elevion
Group



Cool

by

HIGH TECH CLIMA

MEMBER OF
ELEVION GROUP